



CR COX

*Cargo & Marine
Surveyors & Consultants*

Australian Representative for **INSPECTORATE**

45 Canning Highway
East Fremantle WA 6158
AUSTRALIA

Phone: +61 (08) 93398222
Fax: +61 (08) 93398023
Email: survey@crcox.com.au
Website: www.crcox.com.au

SAMPLE PHOTOS – VARIOUS REASONS FOR FAILING HOLD INSPECTION

HATCH COVER UNDERSIDE WITH SOYA BEAN RESIDUES



UPPER HOPPERS WITH PREVIOUS COAL STAINS



UPPER HOPPERS & UNDERDECK FWD



SCRATCH MARKS WITH LOOSE PAINT ON LOWER HOPPERS



TANK TOP MANHOLES



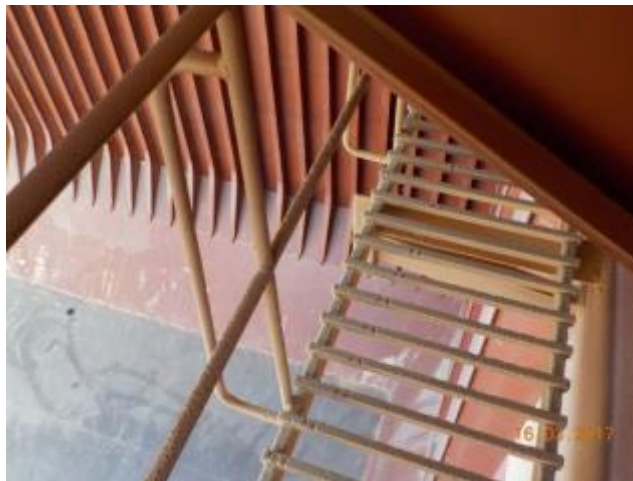
SCRATCH MARKS ON LOWER HOPPERS



UNDERDECK PLATFORM WITH SBM



UNDERDECK PLATFORM WITH THICK LAYERS OF SBM



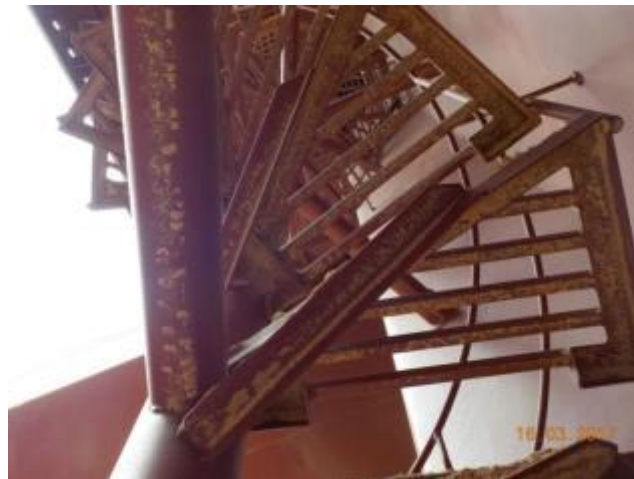
CARGO STUCK BEHIND PIPELINES



LOOSE PAINT ON LOWER HOPPERS



AUSTRALIAN LADDER UNDERSIDE WITH SBM RESIDUES



AUSTRALIAN LADDER WITH SBM RESIDUES



FWD BULKHEAD WITH COAL STAINS



LOWER HOPPER WITH LOOSE PAINT & SCRATCHES



UPPER HOPPERS WITH COAL STAINS



FWD BULKHEAD WITH COAL STAINS



NO. 5 HOLD
FWD UNDERDECK PLATFORM WITH SBM RESIDUES



FWD UNDERDECK PLATFORM WITH SBM RESIDUES



SBM RESIDUES BEHIND FRAMES



RESIDUES BEHIND PIPELINES



LOOSE PAINT DUE TO SCRATCH MARKS ON LOWER HOPPERS



COAL STAINS ON UPPER HOPPER



AFT UNDERDECK PLATFORM WITH SBM RESIDUES



HATCH COVER UNDERSIDES WITH SBM DUST



HATCH COAMING WITH GREASE AND SOME LOOSE PAINT



UPPER HOPPERS WITH SLIGHT COAL STAINS

